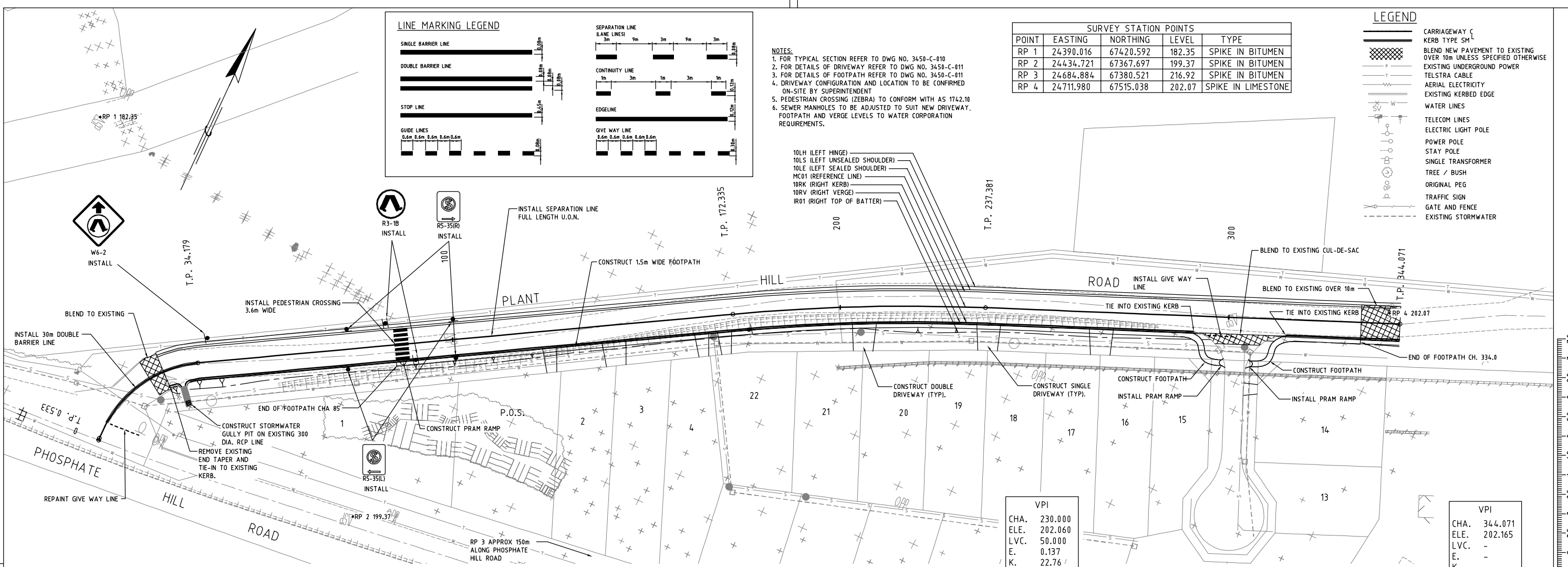
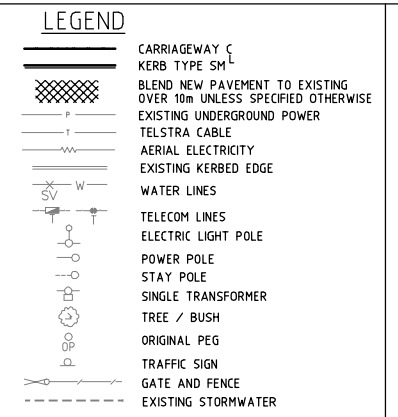
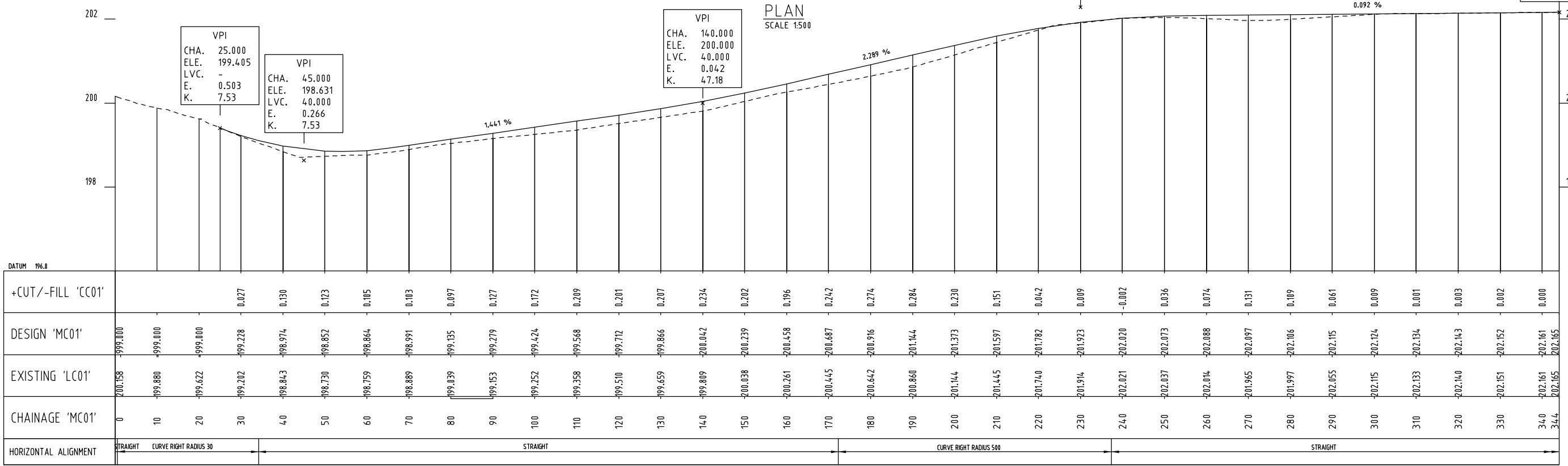


- NOTES:**
- FOR TYPICAL SECTION REFER TO DWG NO. 3450-C-010
  - FOR DETAILS OF DRIVEWAY REFER TO DWG NO. 3450-C-011
  - FOR DETAILS OF FOOTPATH REFER TO DWG NO. 3450-C-011
  - DRIVEWAY CONFIGURATION AND LOCATION TO BE CONFIRMED ON-SITE BY SUPERINTENDENT
  - PEDESTRIAN CROSSING (ZEBRA) TO CONFORM WITH AS 1742.10
  - SEWER MANHOLES TO BE ADJUSTED TO SUIT NEW DRIVEWAY, FOOTPATH AND VERGE LEVELS TO WATER CORPORATION REQUIREMENTS.

SURVEY STATION POINTS				
POINT	EASTING	NORTHING	LEVEL	TYPE
RP 1	24390.016	67420.592	182.35	SPIKE IN BITUMEN
RP 2	24434.721	67367.697	199.37	SPIKE IN BITUMEN
RP 3	24684.884	67380.521	216.92	SPIKE IN BITUMEN
RP 4	24711.980	67515.038	202.07	SPIKE IN LIMESTONE



PLAN SCALE 1:500



PROFILE SCALE: HOR 1:500 VER 1:50

**WML CONSULTANTS**  
 CONSULTING CIVIL, GEOTECHNICAL & STRUCTURAL ENGINEERS  
 PROJECT MANAGERS  
 FIRST FLOOR, 62 WITTENOOM STREET BUNBURY, WA 6230  
 POST OFFICE BOX 2023, BUNBURY WA 6231  
 TELEPHONE: (08) 9722 3544 FAX: (08) 9722 3599

REVISIONS			
N°	DESCRIPTION	APPROVED	DATE DRAWN
B	FOOTPATH MODIFIED, DRAINAGE PIT ADDED, LINES & SIGNS ADDED.	G WOODROOF	04/2008
A	ISSUED FOR TENDER	G WOODROOF	03/2008

SHIRE OF CHRISTMAS ISLAND  
 NOTE: \* INDICATES SIGNATURES ON ORIGINAL ISSUE OF DRAWING OR LAST REVISION OF DRAWING

NAMES PRINTED IN FULL	DATE	CLIENT
DESIGNED A. CONSTANTINE	JAN '08	SHIRE OF CHRISTMAS ISLAND
DRAWN A.C. G.C	JAN '08	
VERIFIED G. WOODROOF	MAR '08	
APPROVED G WOODROOF	25/4/08	

PROJECT
PLANT HILL ROAD

DRAWING TITLE
PLAN PROFILE CHA 0 TO CHA 344

THIS DRAWING SHALL BE TREATED AS PRELIMINARY AND IS NOT TO BE USED FOR CONSTRUCTION PURPOSES UNLESS SIGNED AS APPROVED.

DRAWING NUMBER **3450-C-100 B** REVISION